



TACTICAL BOUGIETM

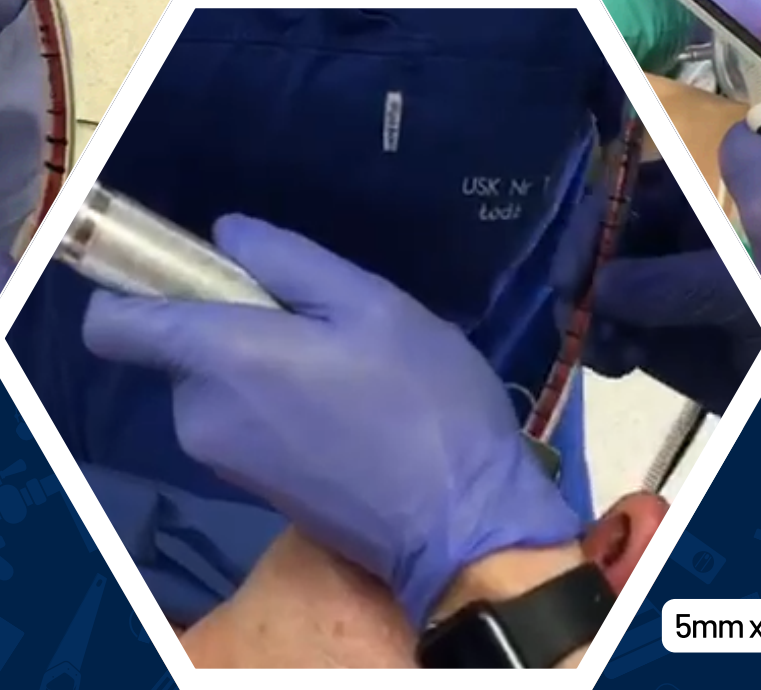
Endotracheal tube introducer with Safety Markers

FOR USE WITH ENDOTRACHEAL TUBES 6.0MM ID AND LARGER IN ADULT PATIENTS

It has brightly marked colored bands at both ends that allows rapid accurate insertion to the correct depth by the user and helps to keep the bougie in the same position during use to avoid patient injury or inadvertent removal of the bougie.



Designed specifically for use by EMS professionals. Fits in paramedic bags, pockets and compact spaces.



5mm x 70cm



+1 877-723-7648
info@adroitsurgical.com
www.adroitsurgical.com

COLORLED SAFETY MARKINGS

LATEX FREE

SINGLE USE

10001 Broadway Extension Suite A, Oklahoma City, OK 73114, USA